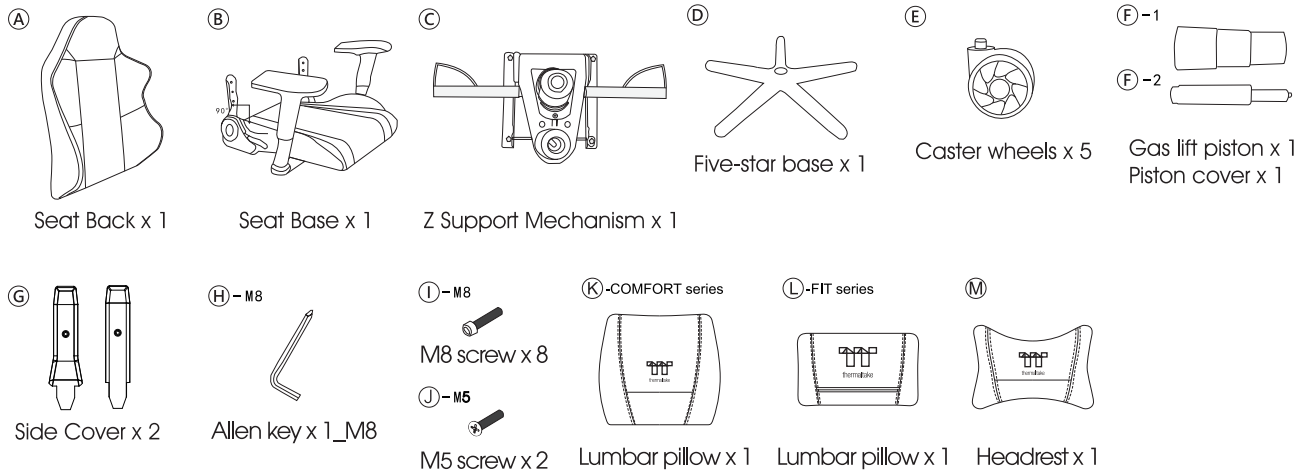


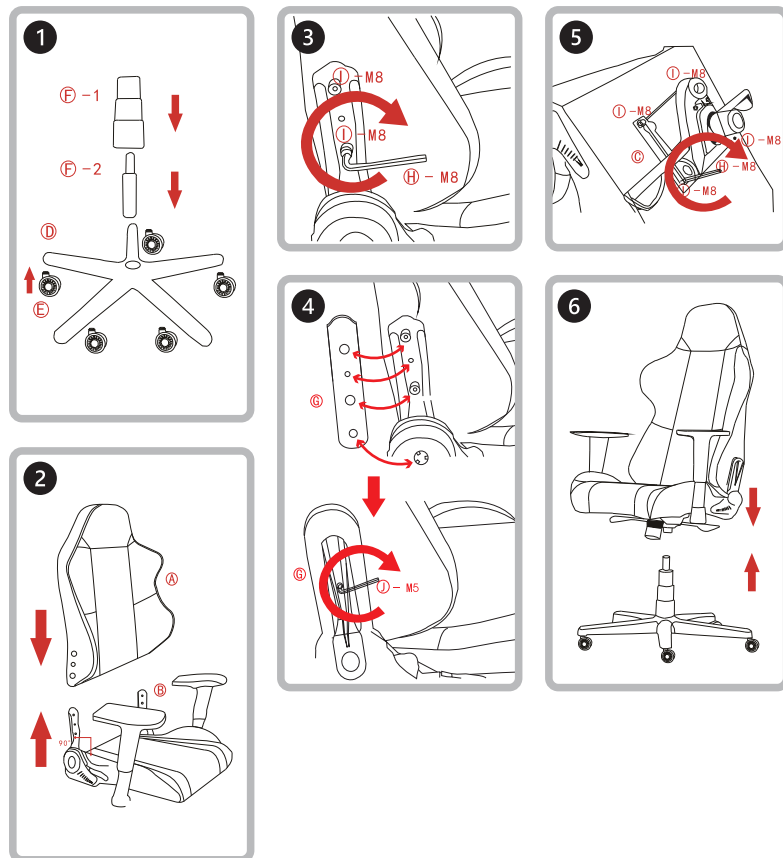
ACCESSORIES



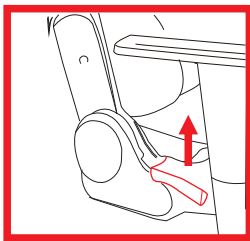
Attention Please make sure the angle of the adjuster on the seat base is set at 90 degrees (As shown in **B**)

STEP by STEP

1. Install the caster wheels, gas lift piston and piston covers onto the five-star base. Please note: when installing the caster wheels, hold the wheels at a 90-degree with a firm grip of the hand; and do not use tools to knock it into place or the ground as to prevent damage.
2. Put seat back onto the seat base.
3. Take out the M8 screws and use M8 allen key to fix the seat back onto the seat base.
4. Keep the hole sites on the recliner covers aligned with M8 screws. Fix the plastic cover with M5 screw.
5. Mount the Z Support mechanism underneath the seat base using 4x M8 screws. (The screws have been tightened underneath the seat base. Please pay attention to the direction of the Z Support mechanism and make sure the handle is in the right direction.)
6. Insert the gas lift piston onto the notch of the mechanism.



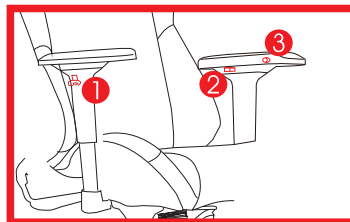
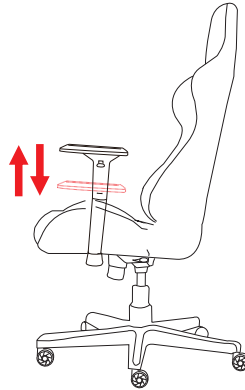
1. SEAT BACKREST ADJUSTMENT



Backward Adjustment of Seat: pull handle upwards and adjust to desired angle by leaning gently against seat back, release handle once desired angle reached.

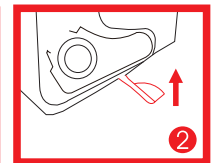
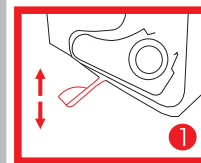
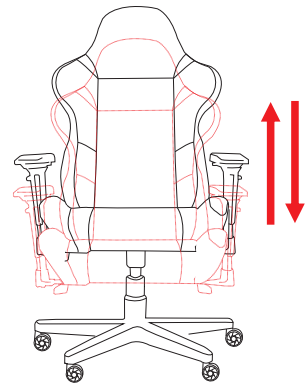
Retracting Seat Back: Pull handle upwards, gently lean back against seat back for automatic angle release.

2. ADJUSTMENT OF ARMRESTS



Lift up the armrest: press button ① under it and then pull up the armrest.
Lower the armrest: press button ① under it and then lower down the armrest leftwards and rightwards.
Press button ② and pull the armrest leftwards and rightwards.
Press button ③ and pull the armrest frontwards and backwards.

3. SEAT HEIGHT ADJUSTMENT



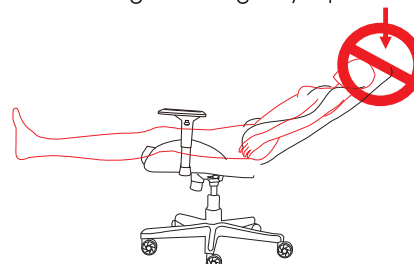
Lowering Seat Height: sit down on seat and pull up right handle to automatically lower seat height. See figure ②.
Lifting seat height: stand up and pull up right handle to release seat height automatically. See figure ②.
Locking Posture Mechanism: pull left handle downwards. See figure ①.
Unlocking Posture Mechanism: pull up left handle upwards. See figure ①.

Attention

1. Max load : TT Gaming X-Fit - 120KG/264.55lb
TT Gaming X-Comfort - 150KG/330.96lb
2. Do not use chair for other purposes other than originally intended by the manufacturer.
3. During installation, it is recommended that a soft covering is placed on the floor to prevent any accidental damage to it during the setup process.
4. Chair is designed for flat surface use.
5. Product is for single person use.
6. Do not place near flammables for risk of catching fire.
7. To prevent damage, keep away from direct sunlight.
8. Do not dismantle parts outside of original installation procedures.
9. Leather clean & care: Dust frequently with a clean, dry cloth. If leather is soiled, it can be wiped with a soft, damp cloth. Let the leather air dry; never use a hair dryer or other heat source to dry leather. Keep out of direct sunlight.
10. For harder to remove stains, use a soaked cloth with mild detergent and gently wipe the affected area. After that, wipe it again with a dry cloth.



For your safety, do not lift up your feet whilst lying flat on the chair.



For your safety, do not push your head back on the headrest area whilst lying flat on the chair.